



**MINISTRY OF BUSINESS,  
INNOVATION & EMPLOYMENT**  
HIKINA WHAKATUTUKI

# **NEW ZEALAND RESEARCH FUNDING ENVIRONMENT AND SUPPORT FOR INTERNATIONAL ACTIVITIES**

---

## **PACENET + multiplier event**

**Auckland, 11 June 2014**

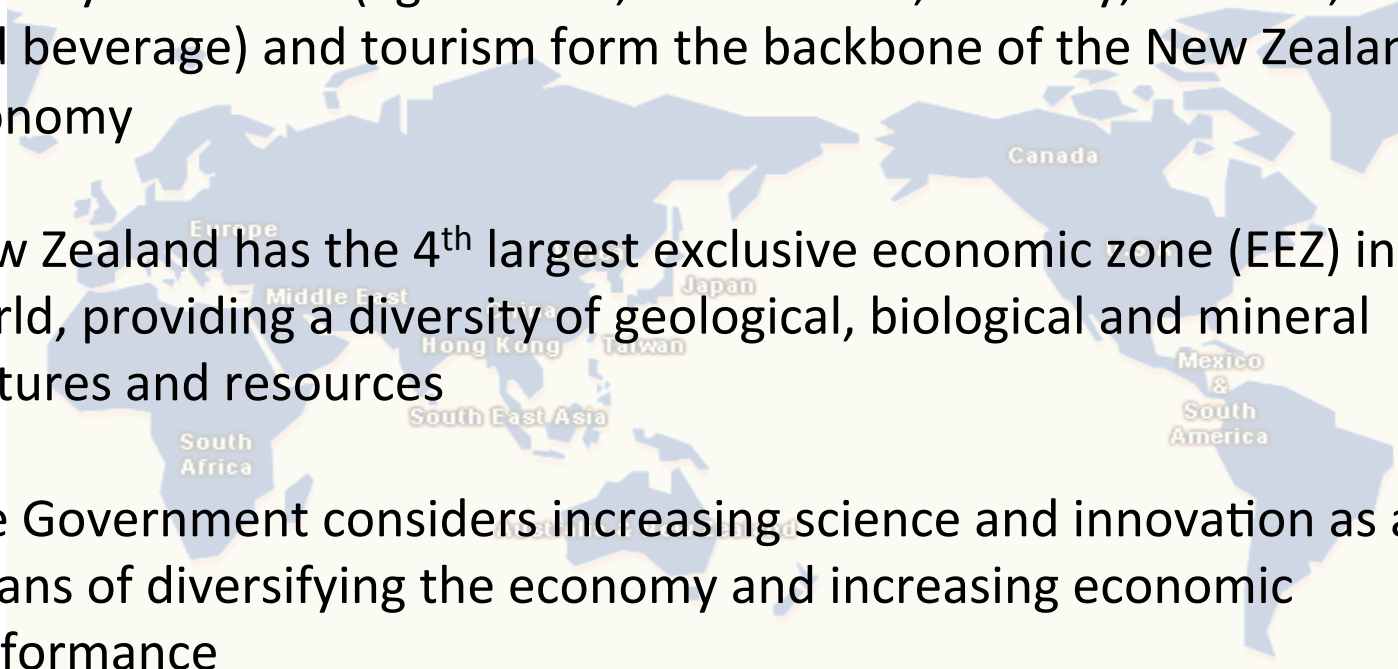
---

Karla Falloon, Manager – International Relationships  
Science Investments Branch, Science, Skills and Innovation Group  
New Zealand Ministry of Business, Innovation and Employment

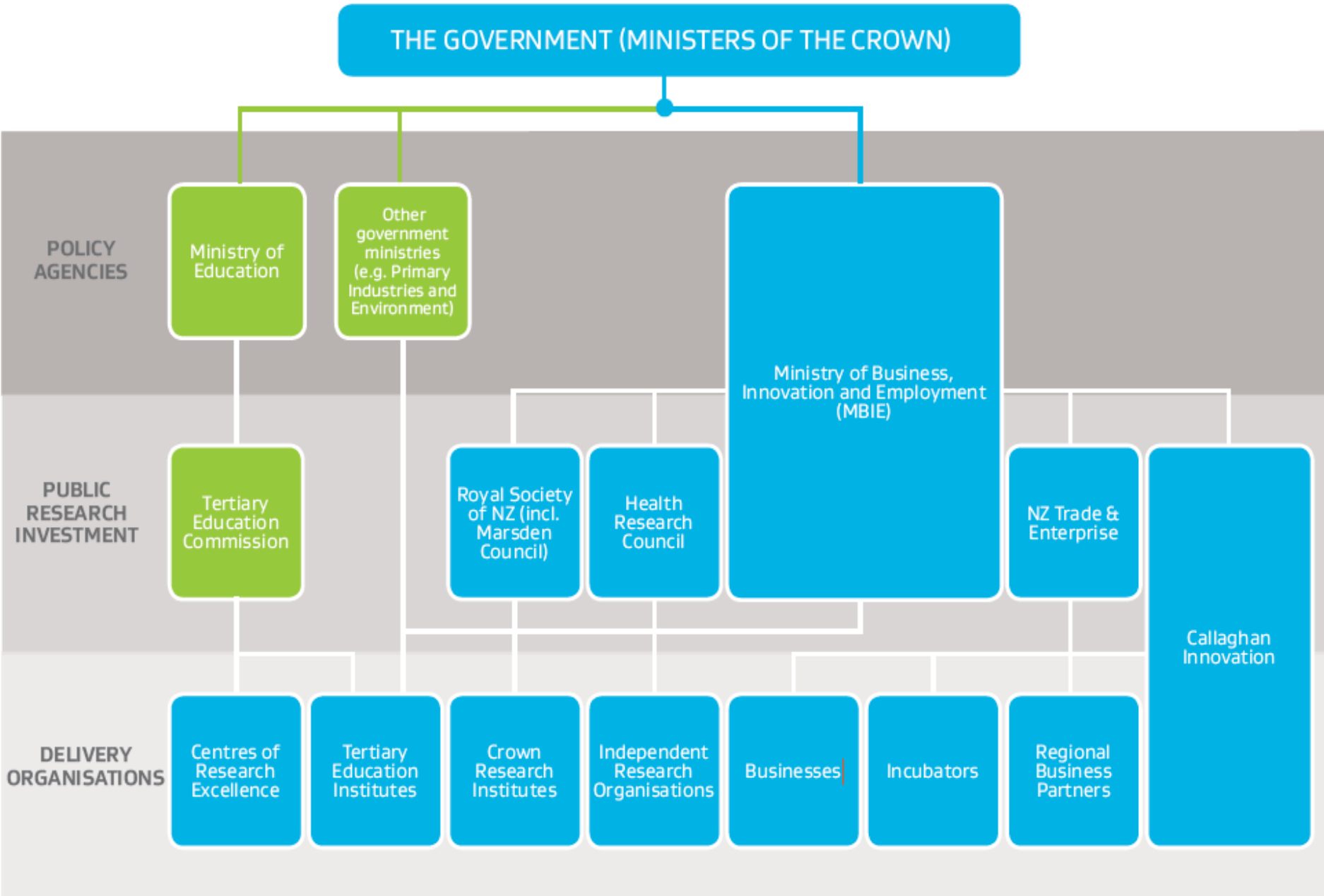


# New Zealand at a glance

- An island nation with low population density, a temperate climate, productive agricultural land and scenic natural environments
- Primary industries (agriculture, horticulture, forestry, seafood, food and beverage) and tourism form the backbone of the New Zealand economy
- New Zealand has the 4<sup>th</sup> largest exclusive economic zone (EEZ) in the world, providing a diversity of geological, biological and mineral features and resources
- The Government considers increasing science and innovation as a key means of diversifying the economy and increasing economic performance

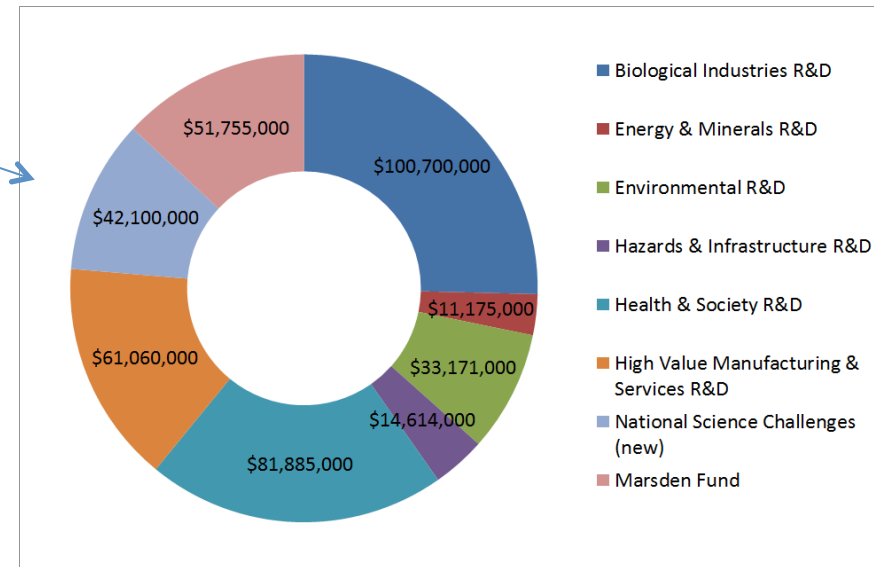
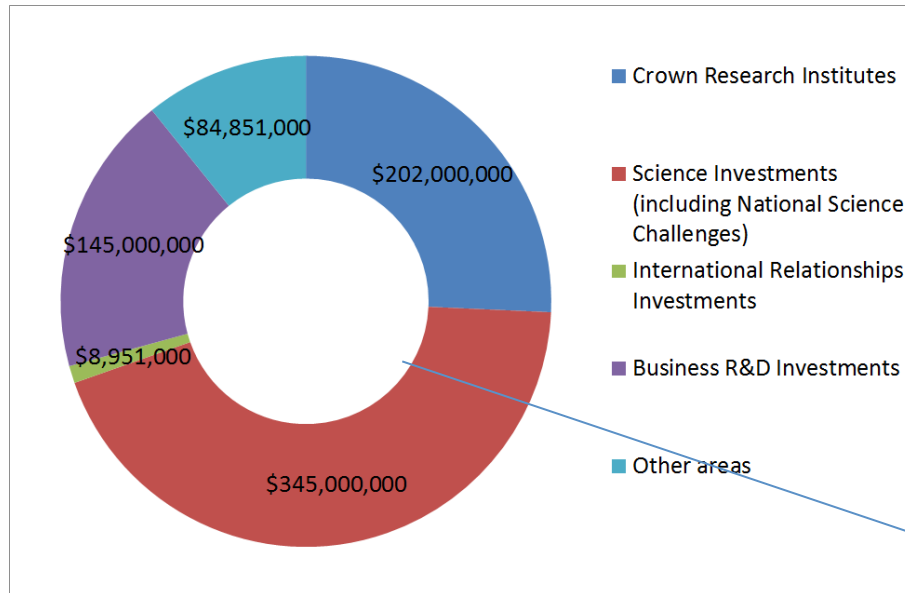


# The Government support for the S&I system



# Vote Science & Innovation, FY2013/14

Total Vote S&I: \$785million p.a.



# National Science Challenges

10 Challenges	Objectives
Ageing well	Harnessing science to sustain health and wellbeing into the later years of life
A better start	Improving the potential of young New Zealanders to have a healthy and successful life
Healthier lives	Research to reduce the burden of major New Zealand health problems
High value nutrition	Developing high value foods with validated health benefits
New Zealand's biological heritage	Protecting and managing our biodiversity, improving our biosecurity, and enhancing our resilience to harmful organisms
Our land and water	Research to enhance primary sector production and productivity while maintaining and improving our land and water quality for future generations
Sustainable seas	Enhance utilisation of our marine resources within environmental and biological constraints.
The deep south	Understanding the role of the Antarctic and the Southern Ocean in determining our climate and our future environment
Science for technological innovation	Enhancing the capacity of New Zealand to use physical and engineering sciences for economic growth
Resilience to nature's challenges	Research into enhancing our resilience to natural disasters



# Draft National Statement of Science Investment

- Sets out the Government's current and future priorities for its science investment; 10 year outlook
- Shows the purpose of the investments and how they fit together
- Sets out forward policy directions with focus on contestable funding and infrastructure
- Government is seeking a broad, open conversation about Government's science investment
- Are these investments appropriate? Do they target the right areas?
- <http://www.msi.govt.nz/update-me/major-projects/national-statement-of-science-investment/>



# The International Relationships Fund

- IRF provides just over \$9.m p.a. for activities that initiate, develop and foster collaborations
- The seven IRF objectives broadly support activities that advance New Zealand's national interests
- Supports up to 50 different schemes, mostly relating to MBIE priority partners



# New Zealand-Europe Science & Innovation

- Europe is a key partner for New Zealand in science and innovation.
- The 2009 Science and Technology Cooperation Agreement frameworks bilateral cooperation
- The JSTCC and Roadmap for S&I cooperation support the STC Agreement.
- Next JSTCC meeting in NZ in December 2014
- NZ actively involved in FP7 programmes.





# New Zealand-Europe Science & Innovation

- There are three MBIE-funded mechanisms to support NZ-EU research collaborations:
  1. Research and Innovation Staff Exchange (RISE)
  2. European Cooperation in Science and Technology (COST)
  3. Knowledge-based bioeconomy Forum (KBBE)
- MBIE also supports FRIENZ, Callaghan Innovation's European connections and many EU Member State schemes
- The RSNZ manages FRIENZ and most of the bilateral programmes

# New Zealand – Pacifica Science & Innovation

- MBIE funds Landcare Research's involvement in PACENET +
- 13 of 1620 international research collaborations in 2012/13 involved Pacific states – 6 from Fiji.
- We support NZ involvement in USA, Australian research programmes in the Pacific





**MINISTRY OF BUSINESS,  
INNOVATION & EMPLOYMENT**  
HIKINA WHAKATUTUKI

---

**Thank you**

**Any questions?**

---

